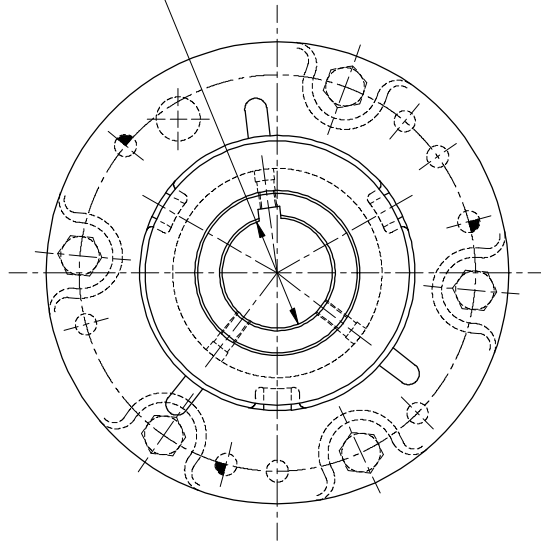
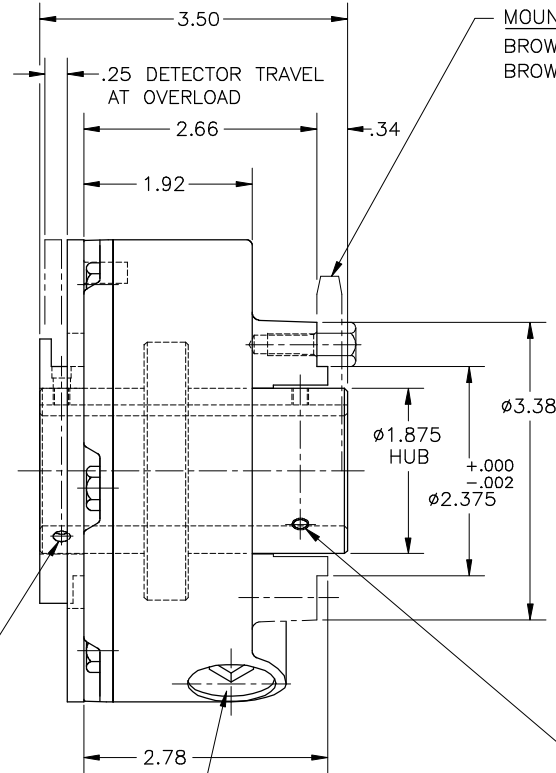


$\begin{matrix} +.002 \\ -.000 \end{matrix}$   
 $\phi 1.250$  (MAX. BORE), .250 WIDE x .12 DP. KEYWAY  
 FOR SHAFTS SMALLER THAN  $\phi 1.250$  USE BROWNING  
 BUSHING KITS CHART. (LOWER L.H. CORNER)



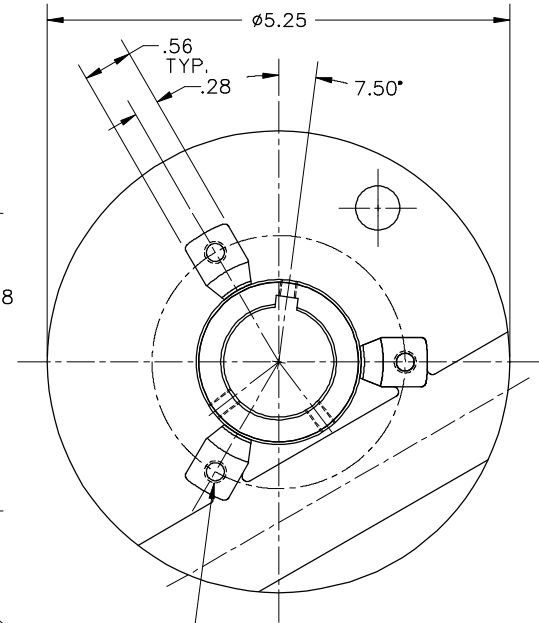
DETECTOR PLATE ASSY. REQUIRES (3)  
 .190-32 SET SCREWS WHICH MUST  
 PROTRUDE (.19 ±.06) FROM HUB WITH  
 OR WITHOUT BROWNING BUSHINGS.

TORQUE ADJUSTING NUT



SET SCREW LENGTHS REQUIRED AT  
 (3) MTG. LUG END MUST BE:  
 (1 REQ'D.) .190-32 x .19 LG. (OVER KEY)  
 (2 REQ'D.) .190-32 SET SCREWS MUST NOT  
 PROTRUDE BEYOND HUB DIA. WHEN USING  
 BROWNING BUSHINGS.

MOUNTING LUG PATTERN WILL ACCEPT THE FOLLOWING.  
 BROWNING SPROCKETS (TG40 A26K, 36K, 45K, 60K, AND 72K)  
 BROWNING GEARBELT PULLEY (TG60H100K)



.250-20 SL., .56 DP. (SPIRALOCK THD.)  
 3 HOLES EQ. SP. ON A  $\phi 2.875$  B.C.

BROWNING BUSHING KITS (TG60)		
SHAFT $\phi$	CAMCO PART No.	BROWNING PART No.
.750	99B19026019999	60BU012
.875	99B19026229999	60BU014
.9375	99B19026029999	60BU015
1.000	99B19026039999	60BU0100
1.125	99B19026049999	60BU0102
20MM	99B19026259999	60BU020MM
25MM	99B19026289999	60BU025MM
28MM	99B19026299999	60BU028MM

TORQUE RANGE	200-600 in/lbs
SPRING PART NO.	94A15731000000
MAX. RPM	900
WEIGHT (LBS)	5.5

CERTIFIED SALES DRAWING		 COMMERCIAL CAM CO., INC. SUBSIDIARY OF EMERSON ELECTRIC CO. 1444 S. WOLF RD., WHEELING, ILLINOIS 60090 www.camcoindex.com	
		TITLE: MODEL TG60, TORQ-GARD CLUTCH	
PROPRIETARY INFORMATION CONTAINED HEREIN IS CONFIDENTIAL AND IS NOT TO BE DISCLOSED OR DELIVERED TO THIRD PARTIES WITHOUT THE PRIOR WRITTEN CONSENT OF COMMERCIAL CAM SUBSIDIARY OF EMERSON ELECTRIC		DRAWN BY: CL-B	CHECKED: FHK
DATE: 10-18-00 DESCRIPTION OF CHANGE: ADD SPEC CHART		DATE: 04-17-80 DWG. NO.	SCALE: 1=1 C-18660

DATE	DESCRIPTION OF CHANGE	REV. NO.
10-18-00	ADD SPEC CHART	2